

Landsat 30m Resolution Data For New Landmask

(1) Global Surface Water (2018 for seasonality)

The European Commission's Joint Research Centre, UN Environment and Google

(2) UMD Global Forest Study + Google Employees (2014)

Both of them have recent (June 2019) updated data with same 40000P x 40000P for 10x10 degree

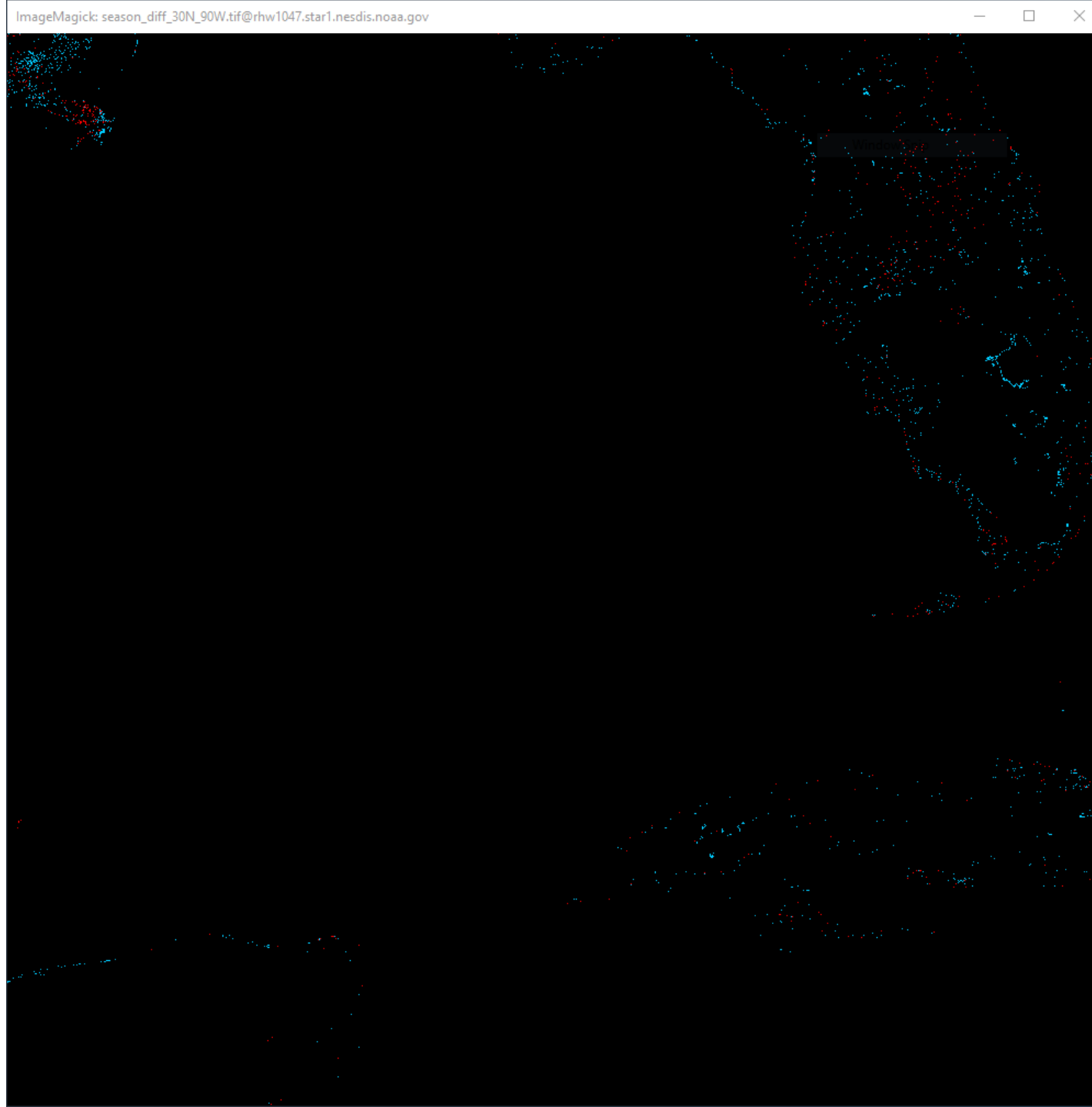
(3) Current 250m resolution landmask file as base map, especially for high latitudes

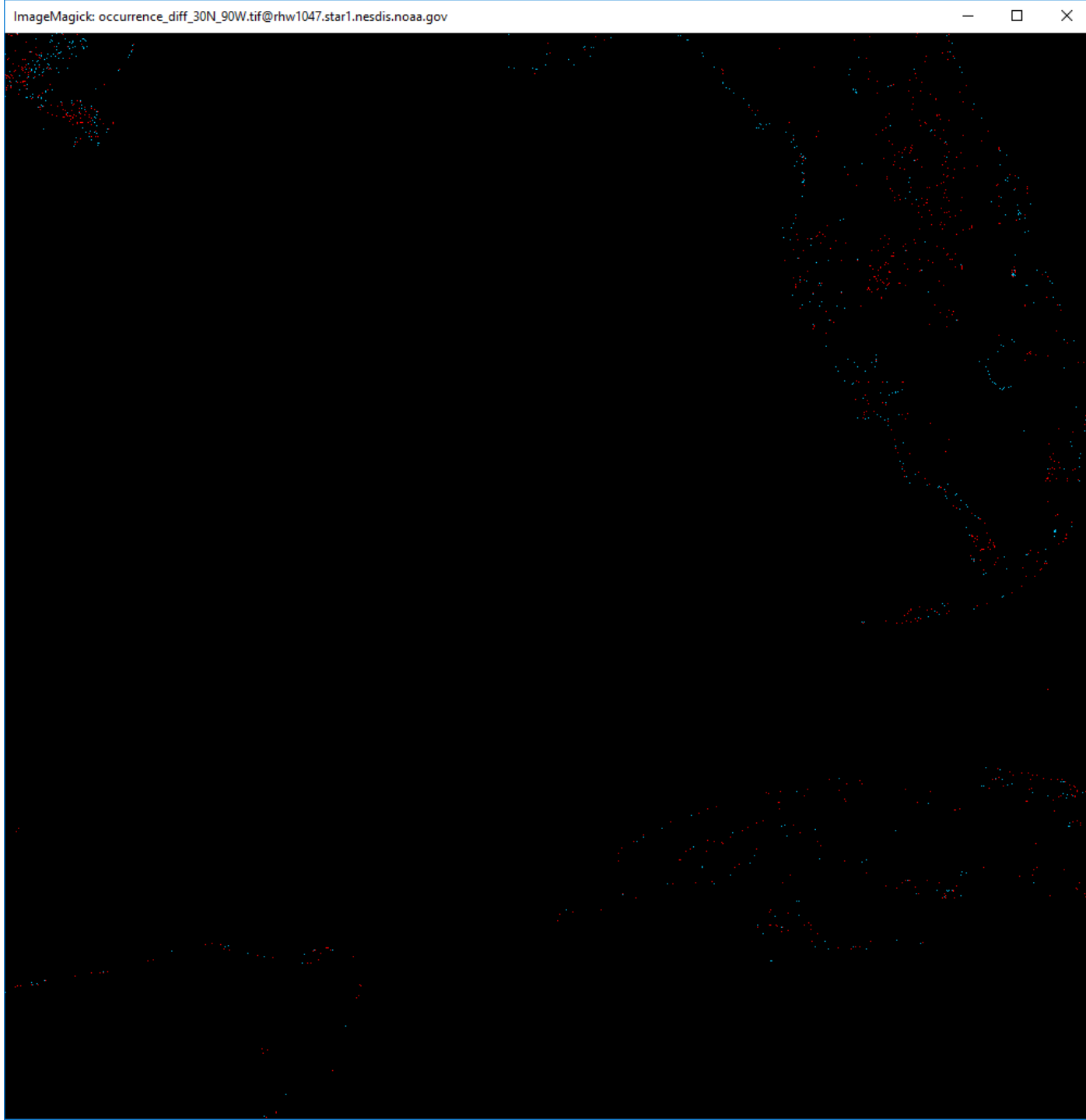
Most image comparisons between GSW and UMD have similar appearances (~ 90% in 504 regional mask files). Some file differences need special attentions with Google Earth verification. And may need replacement after discussions.

30N – 90W
Florida
Season Diff

Blue: GSW water
> 10 month

Red: UMD water

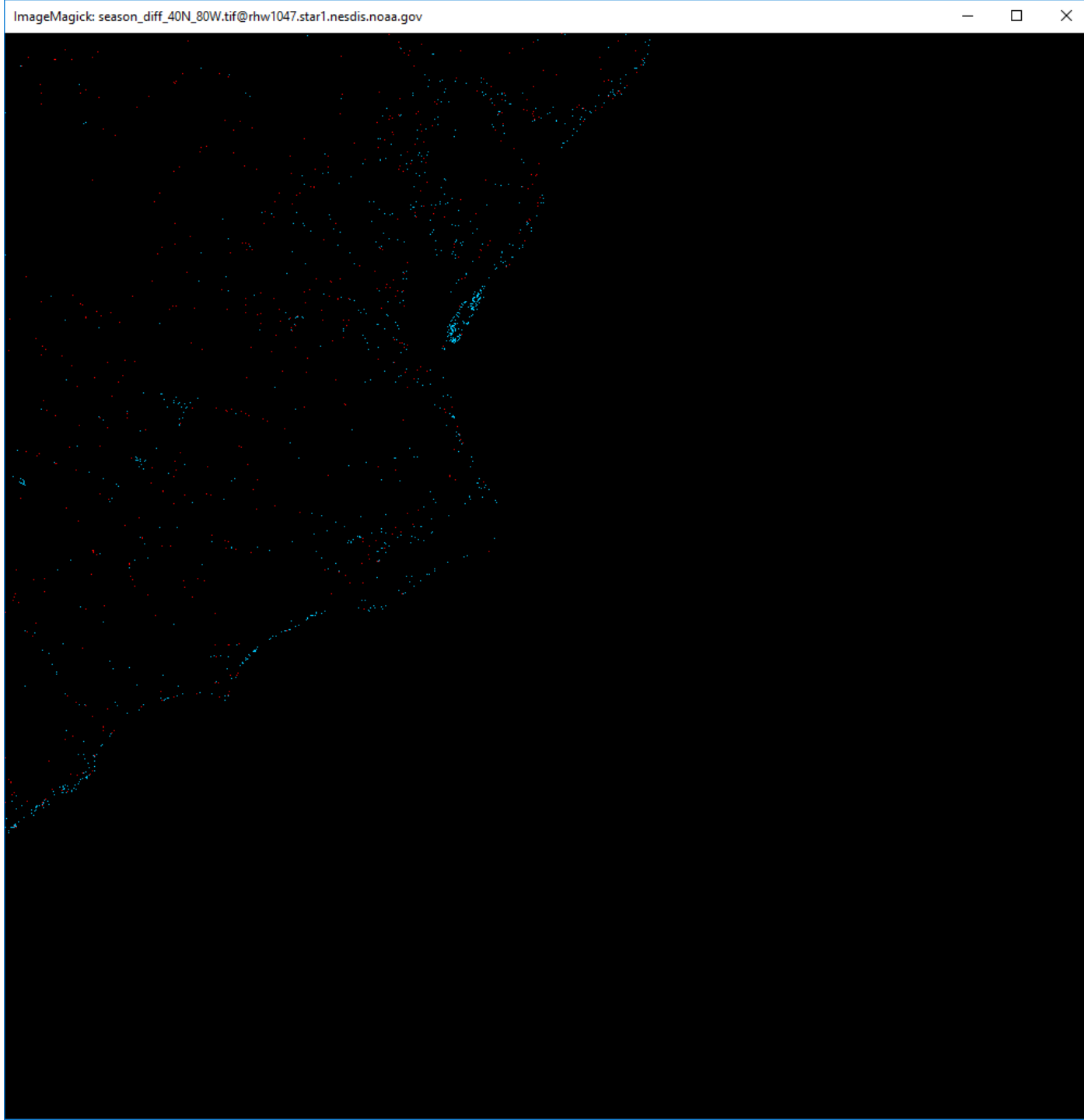




30N 90W
Florida

Occurrence > 85%

40N – 80W
Occurrence Diff
> 85

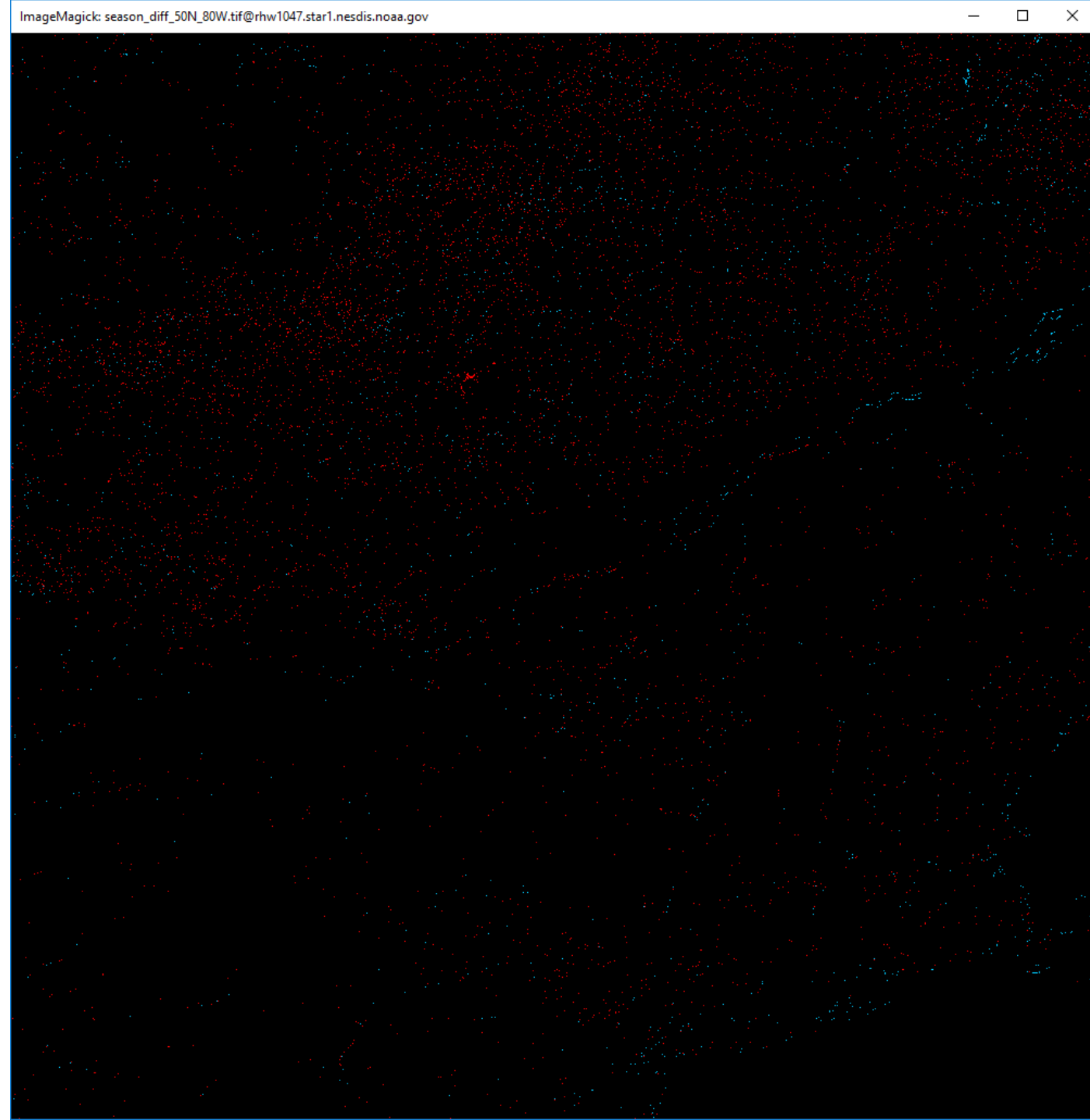


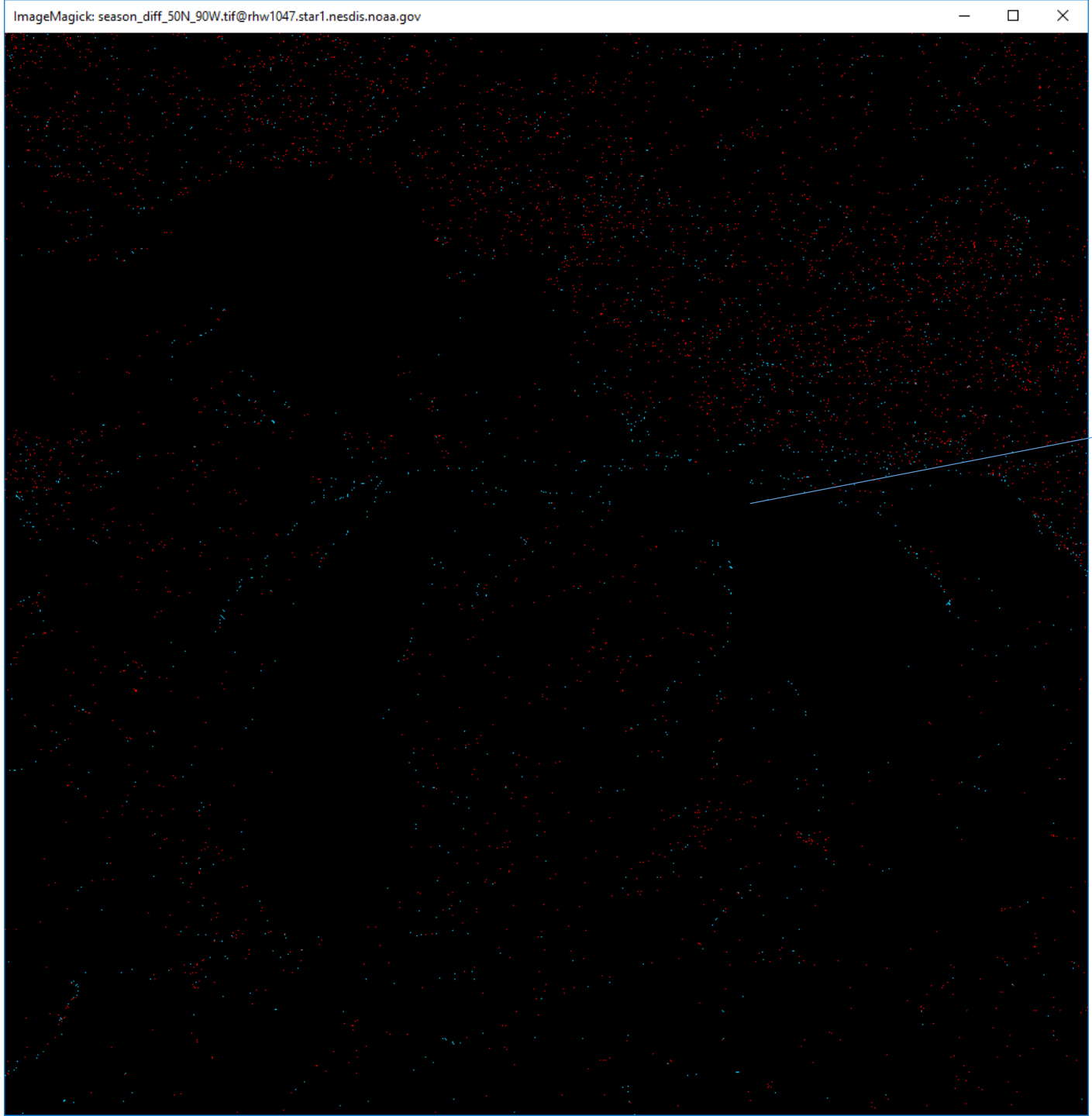
40N 90W
US Central
Season Diff



50N 80W
US North-East

Season Diff





50N 90W

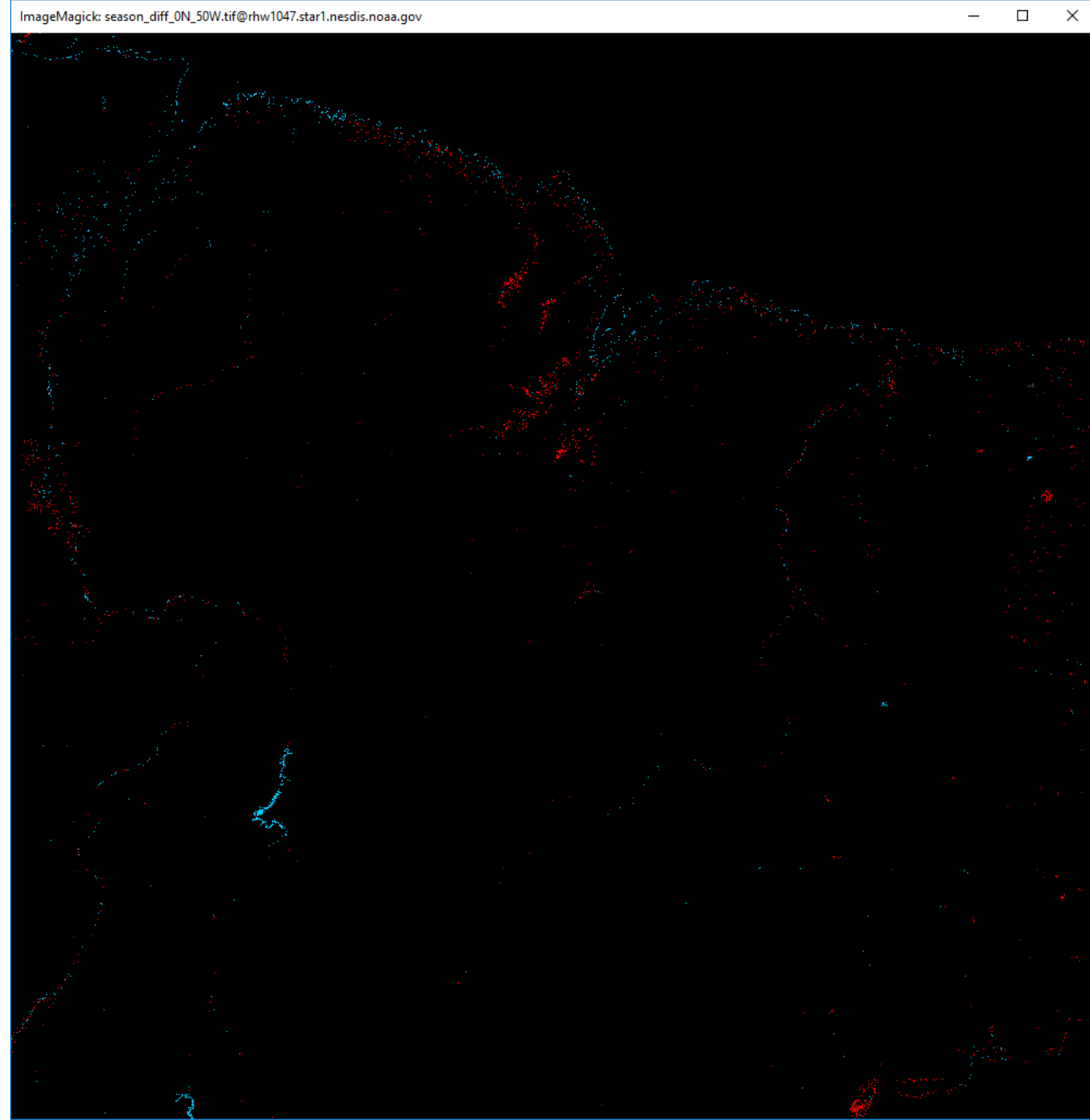
US North

Season diff

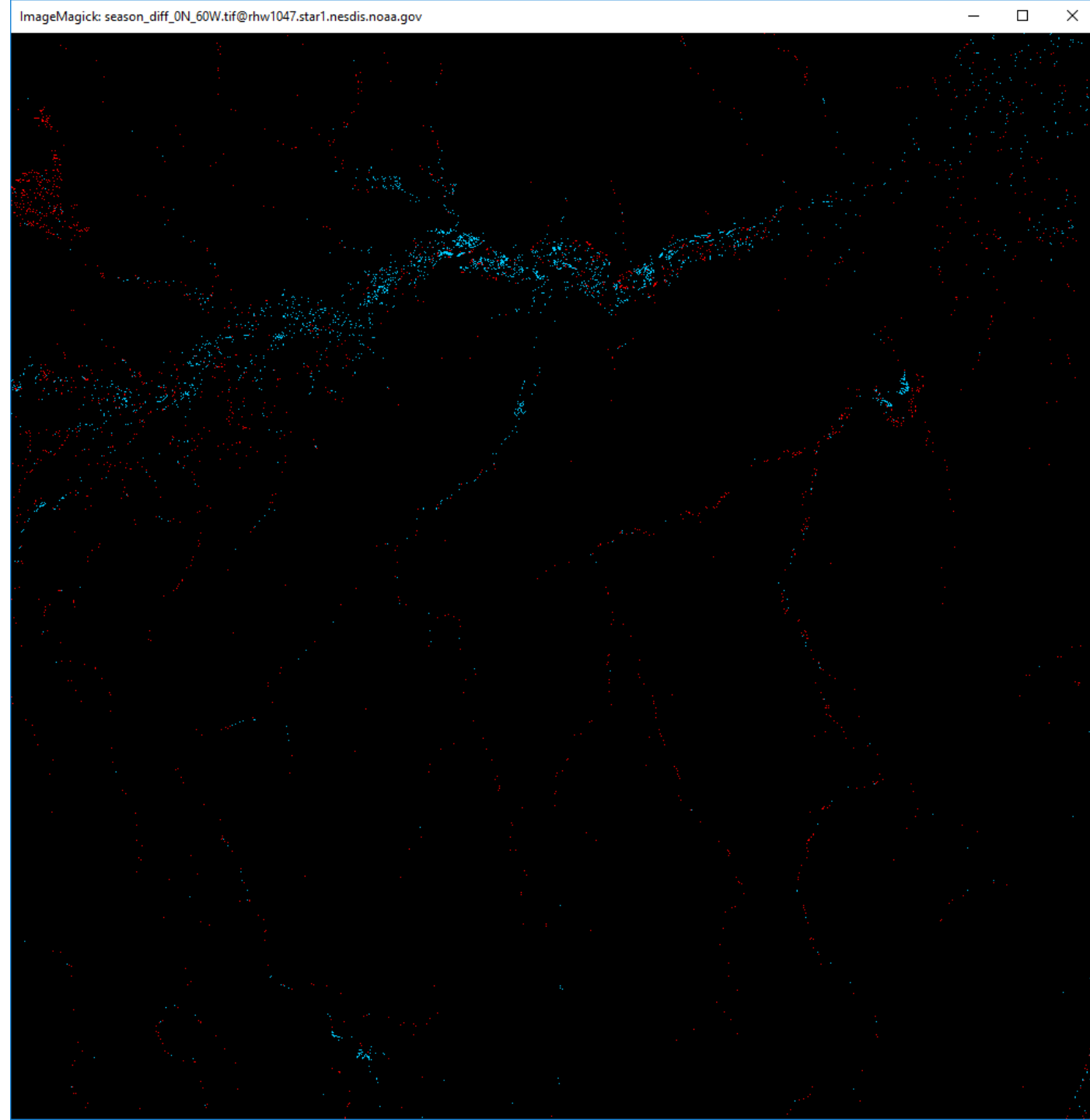
30N 100W
Texas
Season Diff



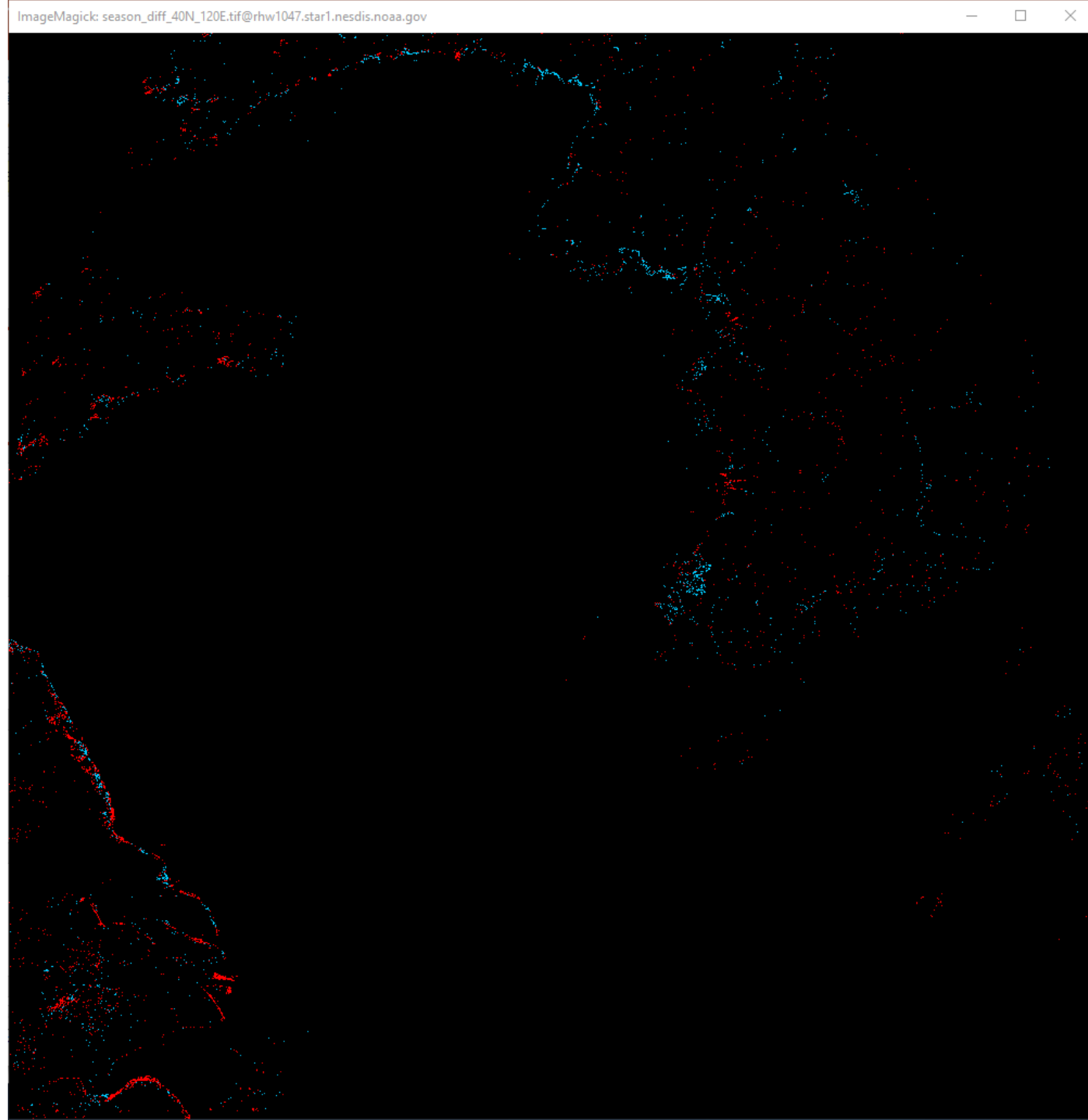
Brazil



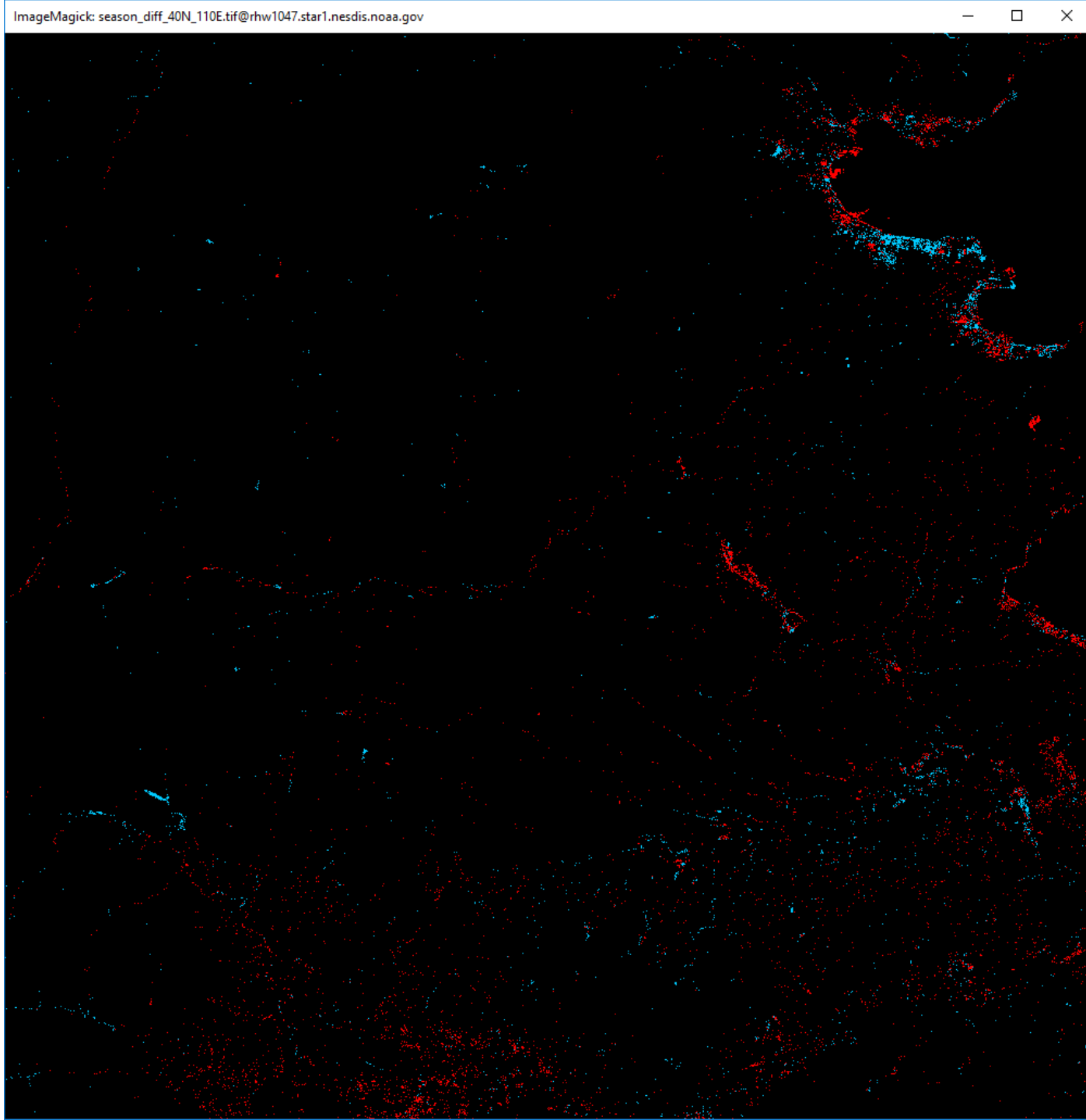
Amazon



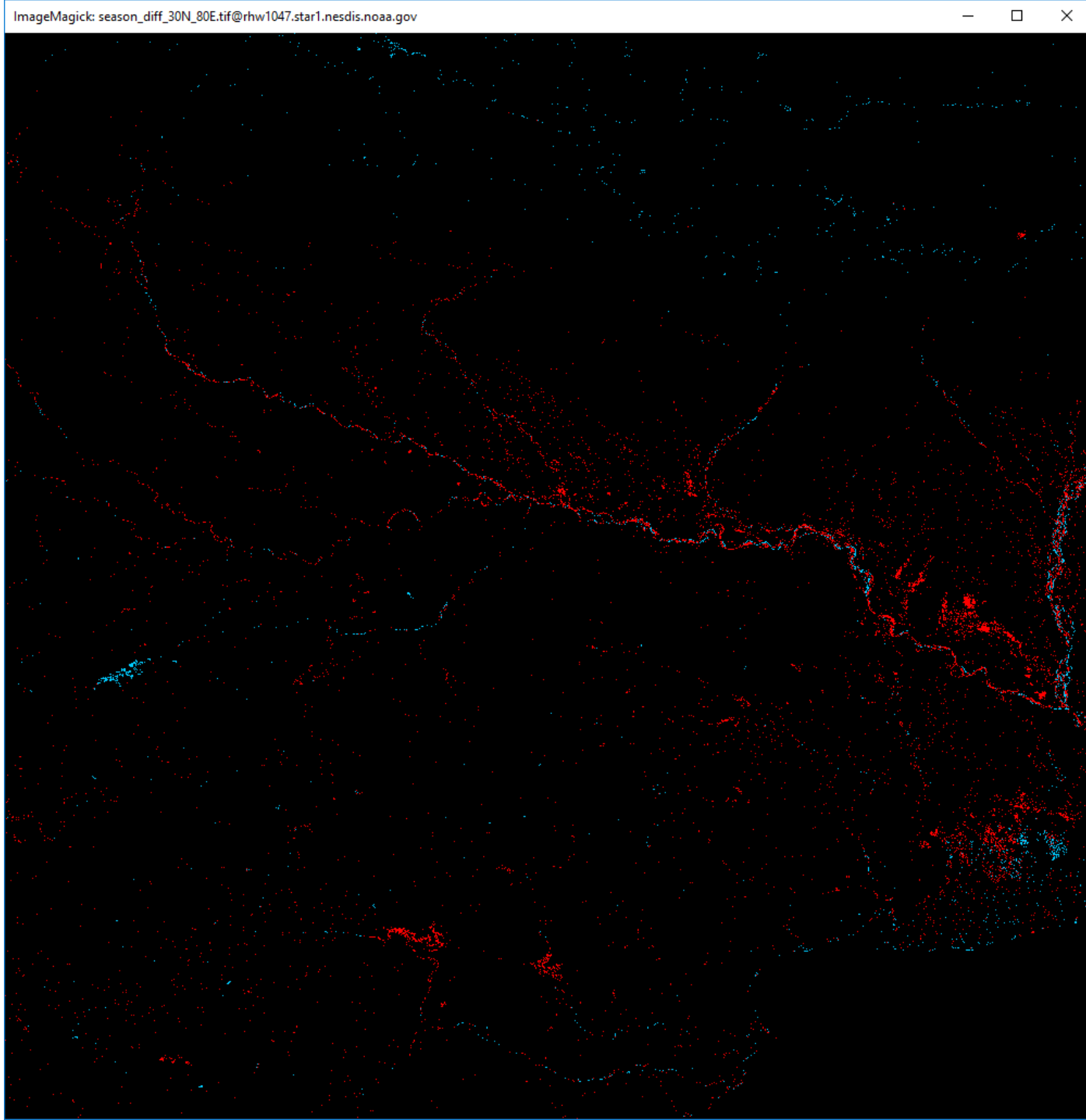
Korea & China



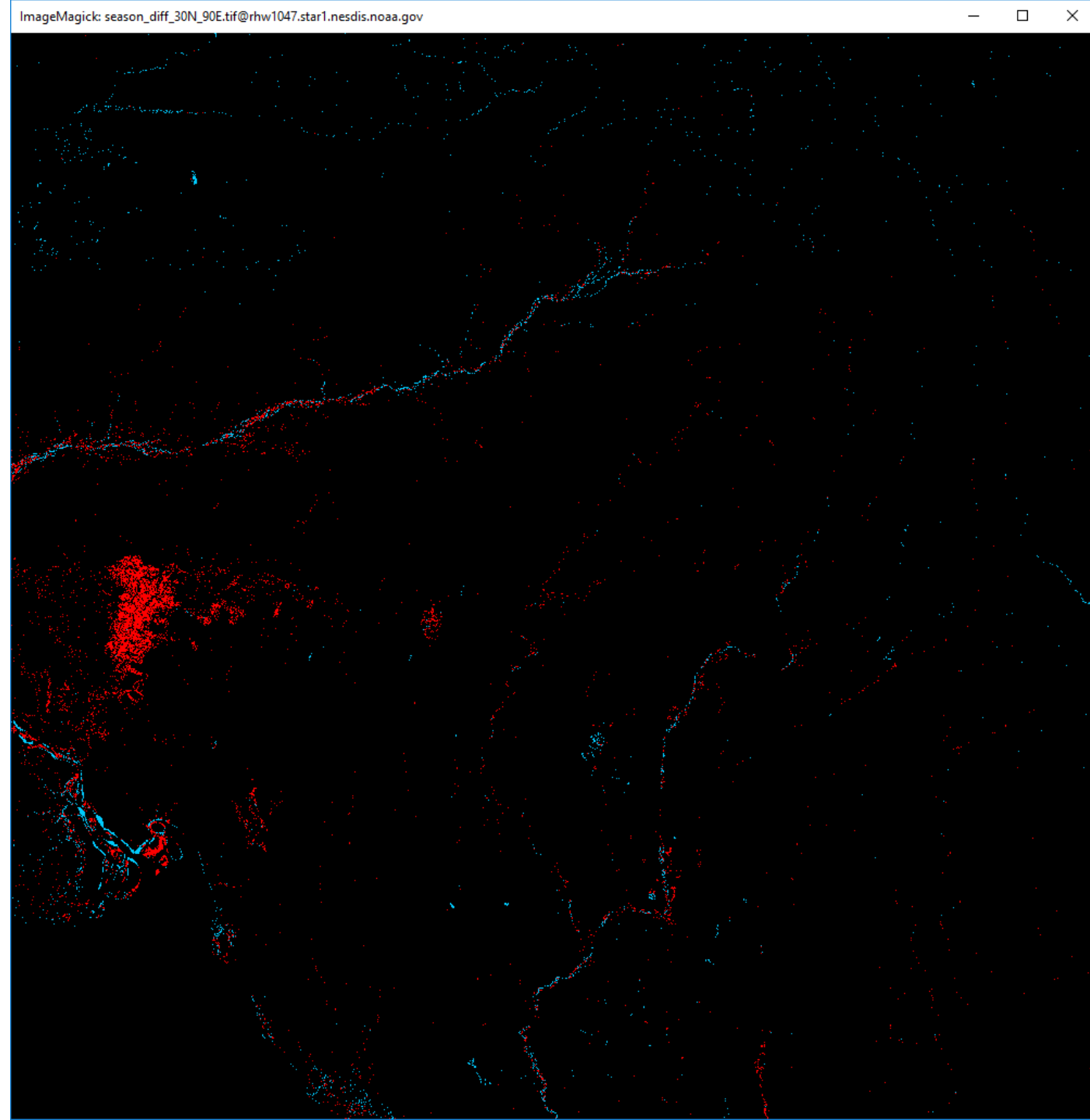
China

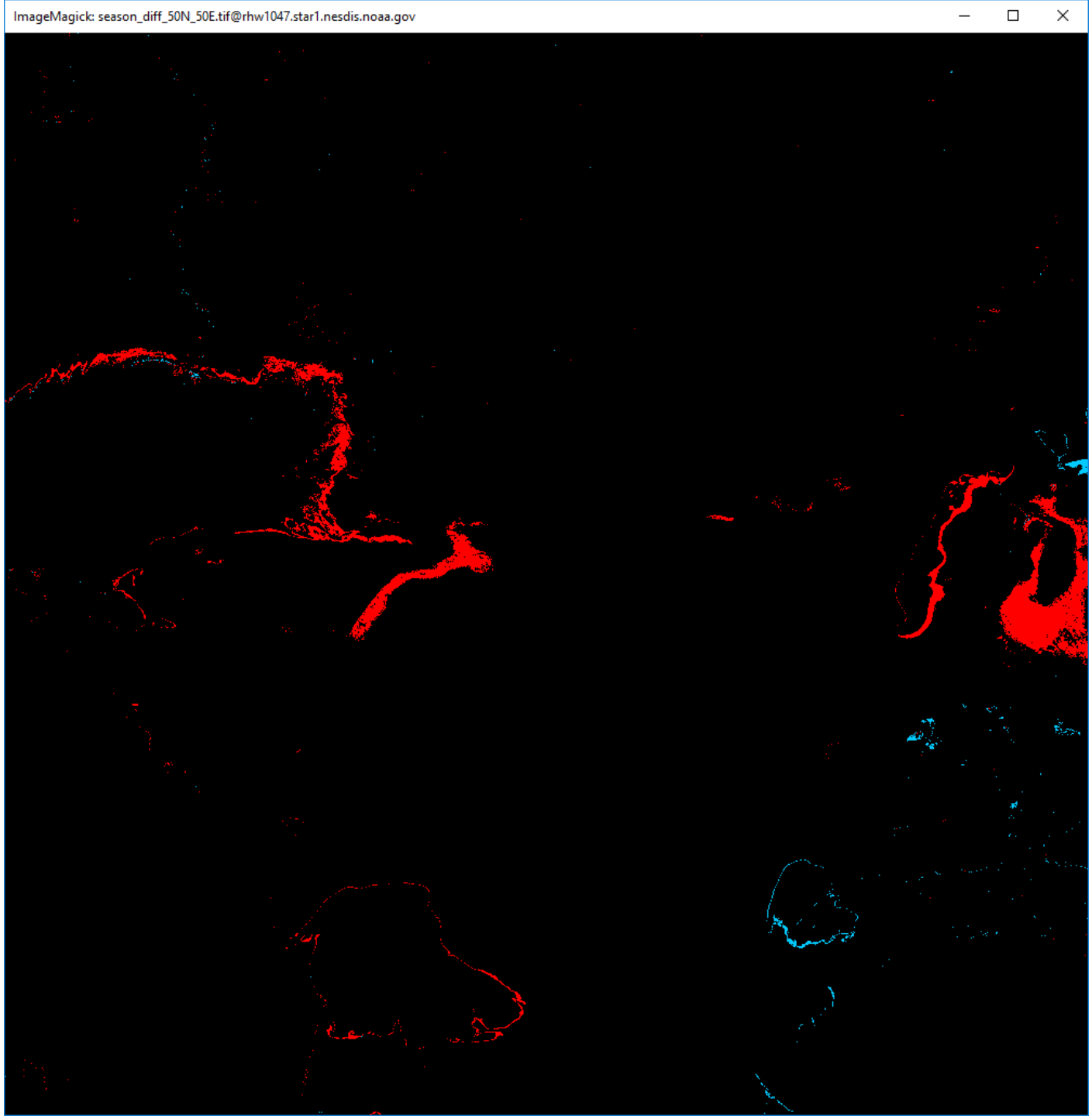


30N 80E
India



30N 90E





50N 50E
Caspian Sea
Season diff

Occurrence > 85%

